

# Explorations in Symmetry

Approachable Masyu Puzzles

Brian Burks

## 1 A Comment

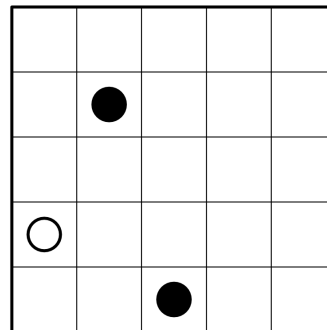
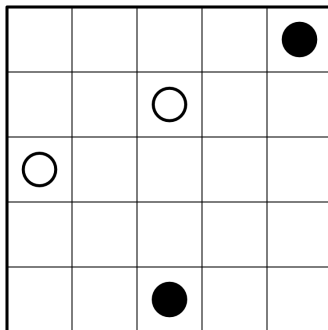
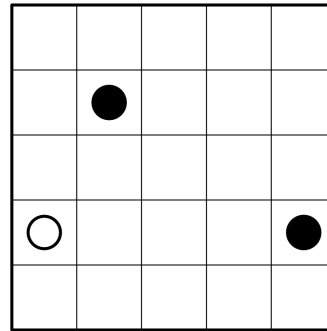
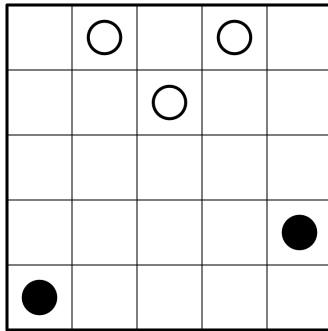
The rules of Masyu may be found at <https://puzzlemine.wordpress.com/puzzle-descriptions/about-masyu/>.

Each of the puzzles larger than five by five contain symmetry. The inherent symmetry of Masyu clues, along with solution uniqueness, means true line or rotational symmetry would be boring: a rotationally symmetric puzzle's solution must be rotationally symmetric, for example. So, these puzzles either add a few extra circles, or contain other types of symmetry.

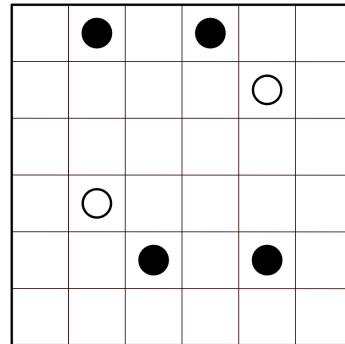
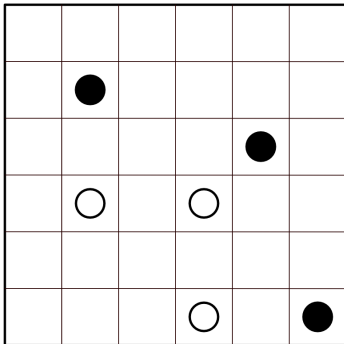
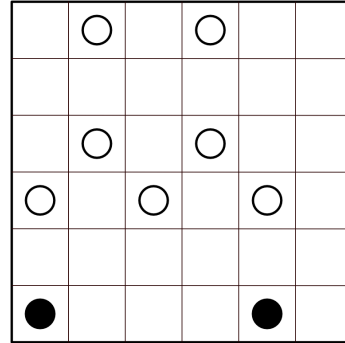
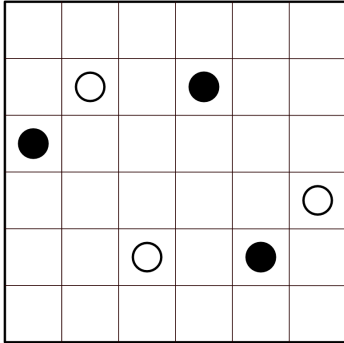
Aside from the first and last puzzles, no attempt was made to sort by difficulty.

## 2 Puzzles

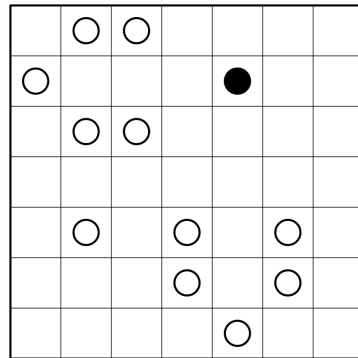
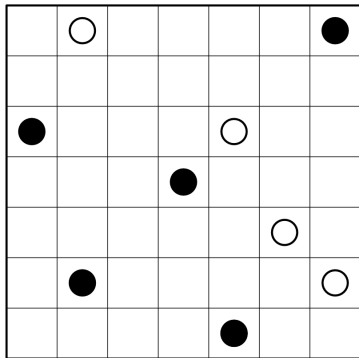
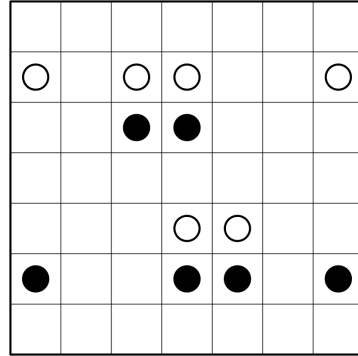
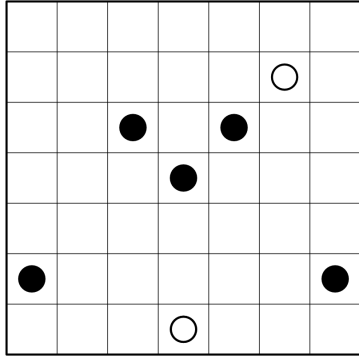
### 2.1 5x5s



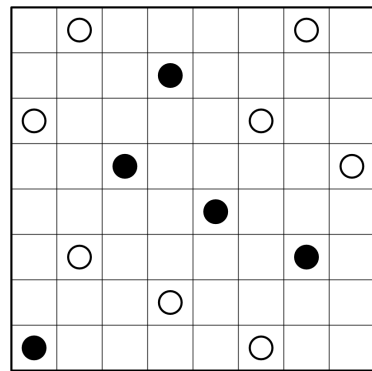
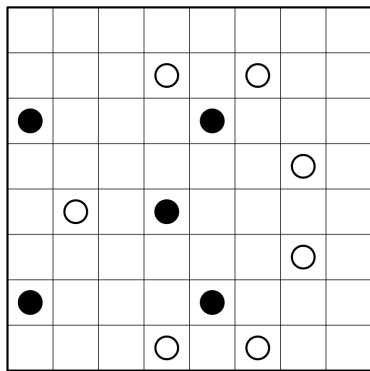
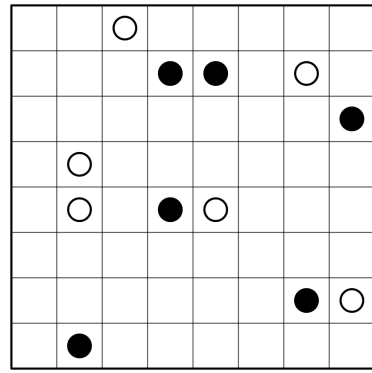
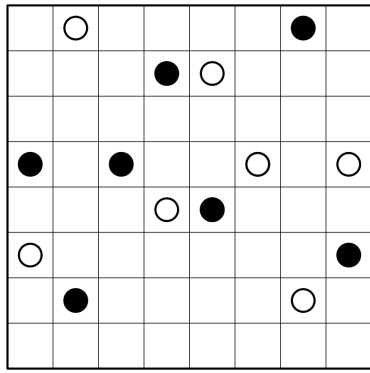
## 2.2 6x6s



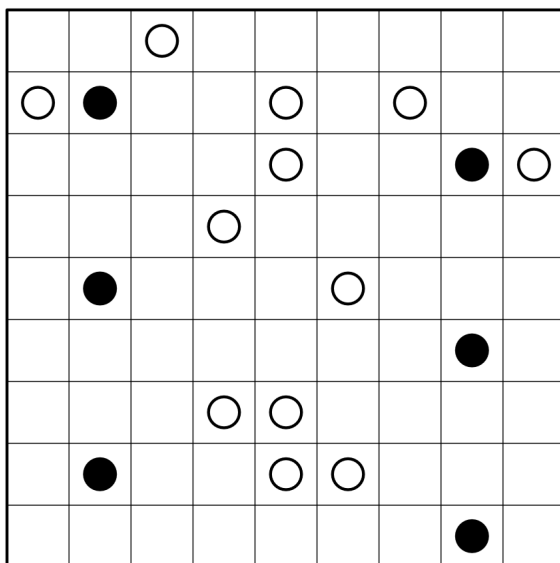
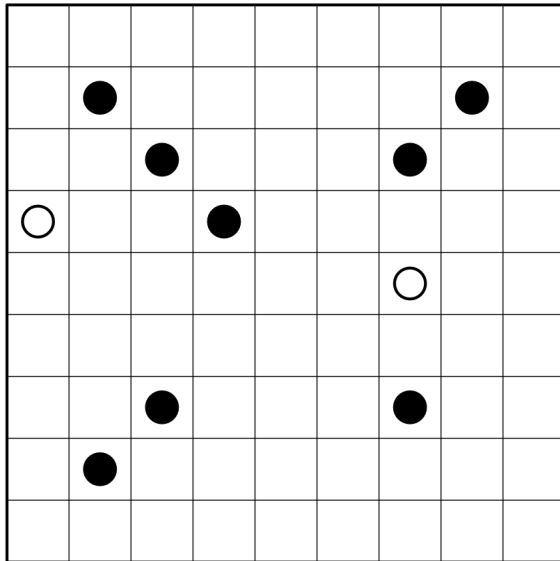
2.3 7x7s



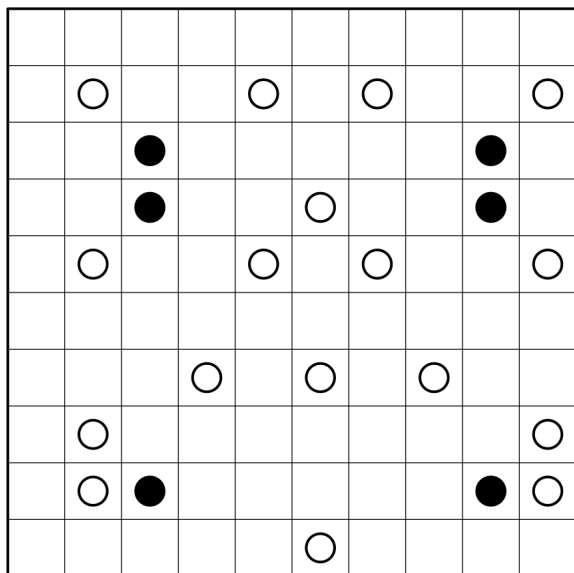
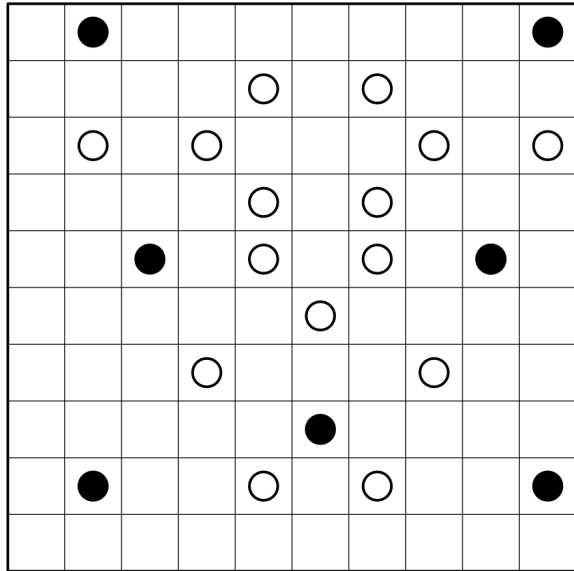
2.4 8x8s



2.5 9x9s



2.6 10x10s



## 2.7 Larger puzzles

